

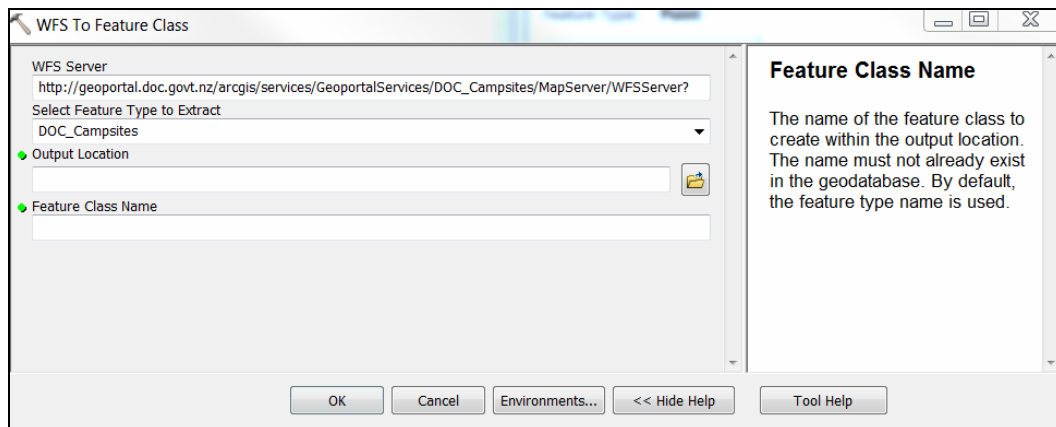
How to obtain data from DOC's Geoportal

<http://geoportal.doc.govt.nz>



How to convert from Web Feature Service (WFS) to feature class using ArcGIS:

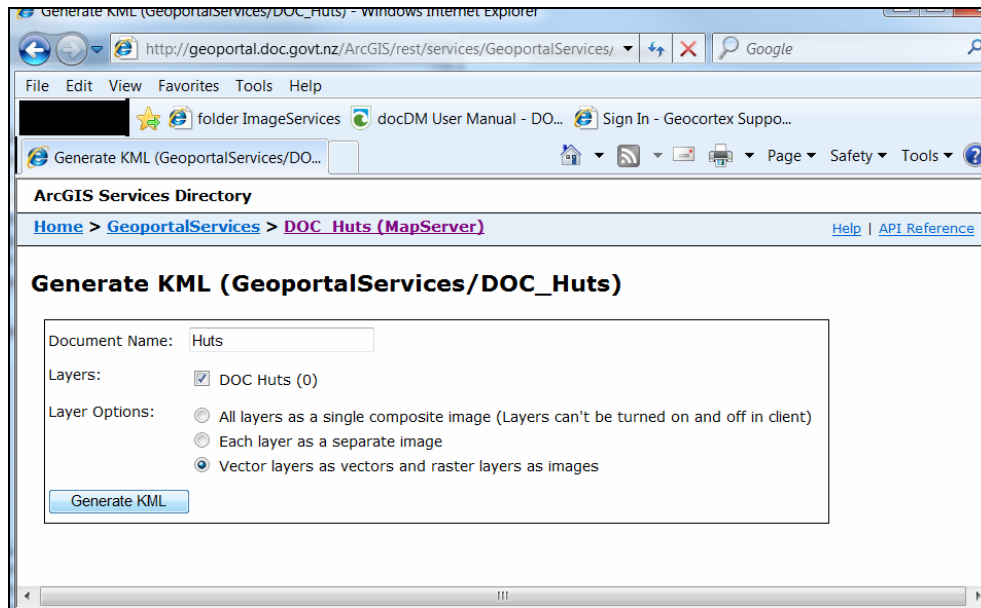
1. Go to geoportal.doc.govt.nz
2. Click the search box and hit enter (to search all records)
3. Click on the data of interest (eg. DOC Huts, DOC Tracks)
4. Click Open and scroll to the end of the page.
5. Click WFS
6. Copy URL, up to and including the '?'
Eg.
http://geoportal.doc.govt.nz/arcgis/services/GeoportalServices/DOC_Campsites/MapServer/WFSServer?
7. Open ArcCatalog and search for "WFS To Feature Class" tool in the search bar. You can also navigate to this tool via the toolbox (See screenshot below).



8. Fill in the remaining fields and click OK.
9. You can then find your feature class in the specified output location.

How to extract kmz/kml layers from Geoportal using Google Earth:

1. Follow steps 1-4 outlined above
2. Click 'Generate KML' at the end of the page
3. Enter a document name and click the box next to 'Layers' (See screenshot below).



4. Click 'Vector layers as vectors and raster layers as images' under Layer Options.
5. Click 'Generate KML' button
6. Click Save or Open to open the resulting KMZ in Google Earth
7. Expand 'Layers' in the table of contents window to the left
8. Right-click on your layer and 'Save place as'. This transfers the coordinates and attribution data into a KML/KMZ, which is usable offline.